

## LOW PROFILE BOX HEADERS STRAIGHT PINS

.100" x .100" CENTERS



LR92984 E60980

### PHYSICAL PROPERTIES

INSULATION MATERIAL: Glass filled thermoplastic rated UL 94V-0

COLOR: Blue

CONTACT MATERIAL: Phosphor bronze with 30μ inches min. gold over 50μ inches min. nickel plating

### ELECTRICAL PROPERTIES

CURRENT RATING: 1 Amp

INSULATION RESISTANCE: >1 x 10<sup>9</sup> Ohms @ 500 VDC

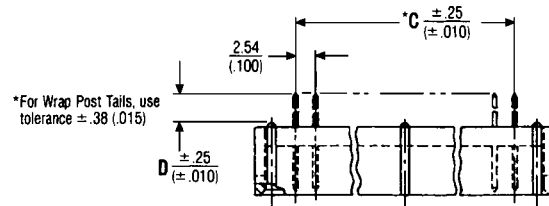
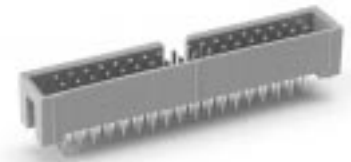
DIELECTRIC STRENGTH: >1000 VRMS @ sea level

### ENVIRONMENTAL PROPERTIES

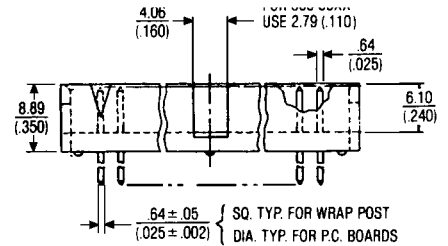
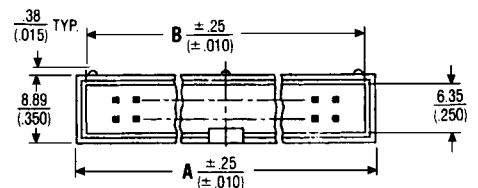
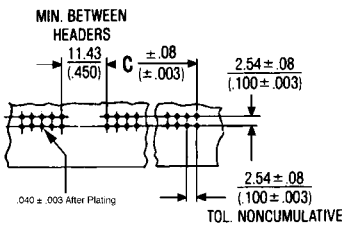
TEMPERATURE RATING: -55°C TO 125°C

### MATING CONNECTORS

FEMALE SOCKETS: See pages 9-12



### RECOMMENDED HOLE PATTERN



HOLE DIA. ±.08 (±.003) AFTER PLATING	TYPE OF CONTACT
.89 (.035)	PCB Solder Tails
1.14 (.045)	Wrap Post Tails

### Ordering Information

CATALOG NUMBERS			NO. OF POS.	DIMENSIONS IN MM (INCHES)		
2.59 (.102) FOR 1.57 (.062) P.C. BOARDS	4.19 (.165) FOR 3.18 (.125) P.C. BOARDS	15.49 (.610) WRAP POST TAILS		A	B	C
609-0627	609-0637	609-0657	6	15.24 (.600)	12.70 (.500)	5.80 (.200)
609-0827	609-0837	609-0857	8	17.78 (.700)	15.24 (.600)	7.62 (.300)
609-1027	609-1037	609-1057	10	20.32 (.800)	17.78 (.700)	10.16 (.400)
609-1227	609-1237	609-1257	12	22.86 (.900)	20.32 (.800)	17.70 (.500)
609-1427	609-1437	609-1457	14	25.40 (1.000)	22.86 (.900)	15.24 (.600)
609-1627	609-1637	609-1657	16	27.94 (1.100)	25.40 (1.000)	17.75 (.700)
609-2027	609-2037	609-2057	20	33.02 (1.300)	30.48 (1.200)	22.86 (.900)
609-2427	609-2437	609-2457	24	38.10 (1.500)	35.56 (1.400)	27.94 (1.100)
609-2627	609-2637	609-2657	26	40.64 (1.6001)	38.10 (1.5001)	30.48 (1.2001)
609-3027	609-3037	609-3057	30	45.72 (1.800)	43.18 (1.700)	35.56 (1.400)
609-3427	609-3437	609-3457	34	50.80 (2.000)	48.26 (1.900)	40.64 (1.600)
609-3627	609-3637	609-3657	36	53.34 (2.100)	50.80 (2.000)	43.18 (1.700)
609-4027	609-4037	609-4057	40	58.42 (2.300)	55.88 (2.200)	48.26 (1.900)
609-4427	609-4437	609-4457	44	63.50 (2.500)	60.96 (2.400)	53.34 (2.100)
609-5027	609-5037	609-5057	50	71.12 (2.800)	68.58 (2.700)	60.96 (2.400)
609-5627	609-5637	609-5657	56	78.74 (3.100)	76.20 (3.000)	68.58 (2.700)
609-6027	609-6037	609-6057	60	83.82 (3.300)	81.28 (3.200)	73.66 (2.900)
609-6427	609-6437	609-6457	64	88.90 (3.500)	86.36 (3.400)	78.74 (3.100)

## LOW PROFILE BOX HEADERS RIGHT ANGLE PINS

.100" x .100" CENTERS



LR92984 E60980

### PHYSICAL PROPERTIES

INSULATION MATERIAL: Glass filled thermoplastic rated UL 94V-0

COLOR: Blue

CONTACT MATERIAL: Phosphor bronze with 30µ inches min. gold over 50µ inches min. nickel plating

### ELECTRICAL PROPERTIES

CURRENT RATING: 1 Amp

INSULATION RESISTANCE: >1 x 10<sup>9</sup> Ohms @ 500 VDC

DIELECTRIC STRENGTH: >1000 VRMS @ sea level

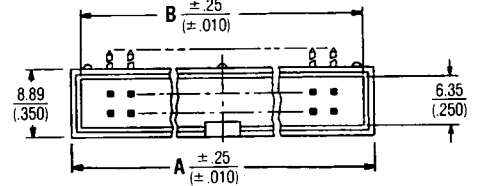
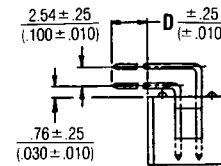
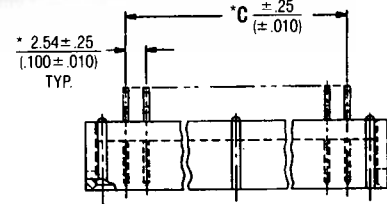
### ENVIRONMENTAL PROPERTIES

TEMPERATURE RATING: -55°C To 125°C

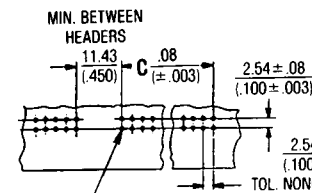
APPLICATION REFLOW TEMPERATURE RATING: -55°C To 125°C

### MATING CONNECTORS

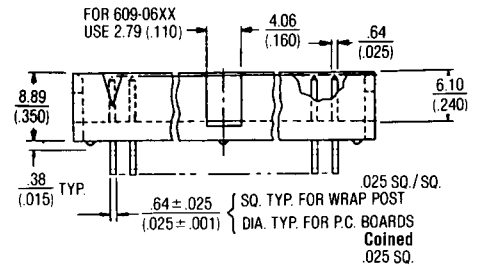
FEMALE SOCKETS: See pages 9-12



### RECOMMENDED HOLE PATTERN



HOLE DIA. ±.08 (±.003) AFTER PLATING	TYPE OF CONTACT
.89 (.035)	PCB Solder Tails
1.14 (.045)	Wrap Post Tails



### Ordering Information

CATALOG NUMBERS			NO. OF POS.	DIMENSIONS IN MM (INCHES)		
DIMENSION "D" IN MM (INCHES)				A	B	C
2.59 (.102) FOR 1.57 (.062) P.C. BOARDS	4.19 (.165) FOR 3.18 (.125) P.C. BOARDS	15.49 (.610) WRAP POST TAILS				
609-0607	609-0617	609-0647	6	15.24 (.600)	12.70 (.500)	5.80 (.200)
609-0807	609-0817	609-0847	8	17.78 (.700)	15.24 (.600)	7.62 (.300)
609-1007	609-1017	609-1047	10	20.32 (.800)	17.78 (.700)	10.16 (.400)
609-1207	609-1217	609-1247	12	22.86 (.900)	20.32 (.800)	17.70 (.500)
609-1407	609-1417	609-1447	14	25.40 (1.000)	22.86 (.900)	15.24 (.600)
609-1607	609-1617	609-1647	16	27.94 (1.100)	25.40 (1.000)	17.75 (.700)
609-2007	609-2017	609-2047	20	33.02 (1.300)	30.48 (1.200)	22.86 (.900)
609-2407	609-2417	609-2447	24	38.10 (1.500)	35.56 (1.400)	27.94 (1.100)
609-2607	609-2617	609-2647	26	40.64 (1.6001)	38.10 (1.5001)	30.48 (1.2001)
609-3007	609-3017	609-3047	30	45.72 (1.800)	43.18 (1.700)	35.56 (1.400)
609-3407	609-3417	609-3447	34	50.80 (2.000)	48.26 (1.900)	40.64 (1.600)
609-3607	609-3617	609-3647	36	53.34 (2.100)	50.80 (2.000)	43.18 (1.700)
609-4007	609-4017	609-4047	40	58.42 (2.300)	55.88 (2.200)	48.26 (1.900)
609-4407	609-4417	609-4447	44	63.50 (2.500)	60.96 (2.400)	53.34 (2.100)
609-5007	609-5017	609-5047	50	71.12 (2.800)	68.58 (2.700)	60.96 (2.400)
609-5607	609-5617	609-5647	56	78.74 (3.100)	76.20 (3.000)	68.58 (2.700)
609-6007	609-6017	609-6047	60	83.82 (3.300)	81.28 (3.200)	73.66 (2.900)
609-6407	609-6417	609-6447	64	88.90 (3.500)	86.36 (3.400)	78.74 (3.100)