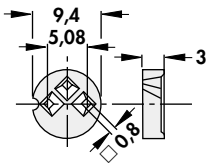


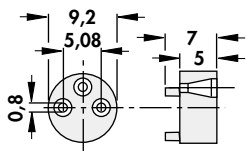
Montagescheiben

Mounting Pads

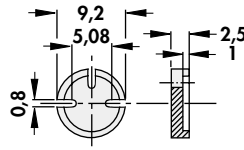
Entretoises



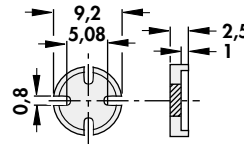
TO 5
MS 53 3



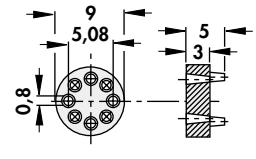
TO 5
MS 53 7



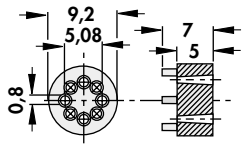
TO 5
MS 53 25



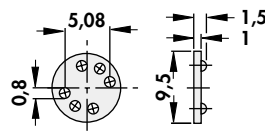
TO 5
MS 54 25



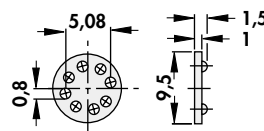
TO 5-8 p.
MS 58 5



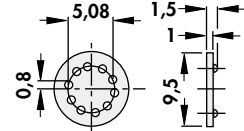
TO 5-8 p.
MS 58 7



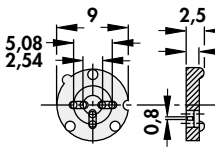
TO 5-6 p.
MS 56 15



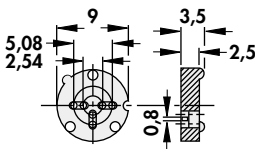
TO 5-8 p.
MS 58 15



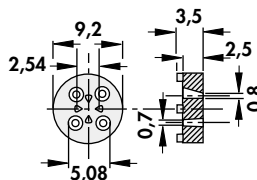
TO 5-10 p.
MS 510 15



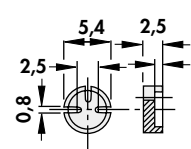
TO 5/18
MS 3518 25



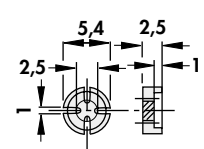
TO 5/18
MS 3518 35



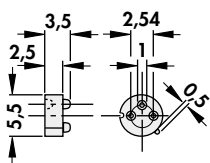
TO 5/18
MS 34 518



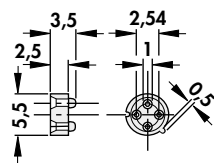
TO 18
MS 183 25



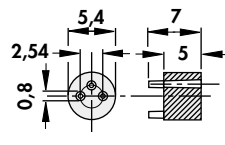
TO 18
MS 184 25



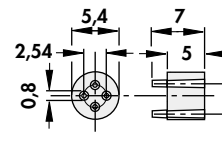
TO 18
MS 183 35



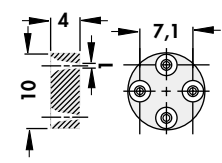
TO 18
MS 184 35



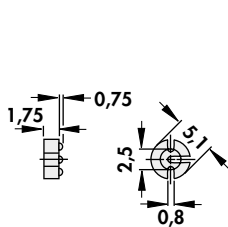
TO 18
MS 183 7



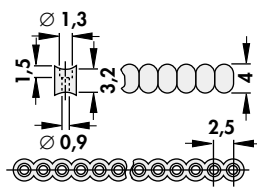
TO 18
MS 184 7



TO 8
MS 84 4

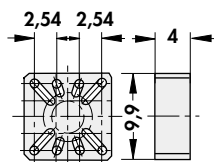


TO 92
MS 923 25

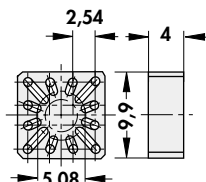


axiale Bauelemente
axial components
composants axiaux

MS 4016
max. 16 pol.



TO 5
US 58 4



TO 5
US 512 4

Umsetzscheiben

Die US-Scheiben setzen den TO 5-Teilkreis auf 2,54 mm Raster um.

Mounting pads

The US-pads convert the TO 5 pin circle to a pitch of .1".

Entretoises

Les rondelles US convertissent le cercle d'un TO 5 en grille de 2,54 mm.

Technische Daten:

Material: glasfaserverstärktes Polyamid
Hitzebeständigkeit: 145°C

Brennbarkeitsklasse: UL 94 V-0

Technical Data:

Material: Polyamide glassfibre filled
Heat resistant: 145°C

Flammability: UL 94 V-0

Caractéristiques techniques:

Matière: Polyamid renforcé de fibre de verre
Résistant thermique jusqu'à 145°C

Inflammabilité: UL 94 V-0