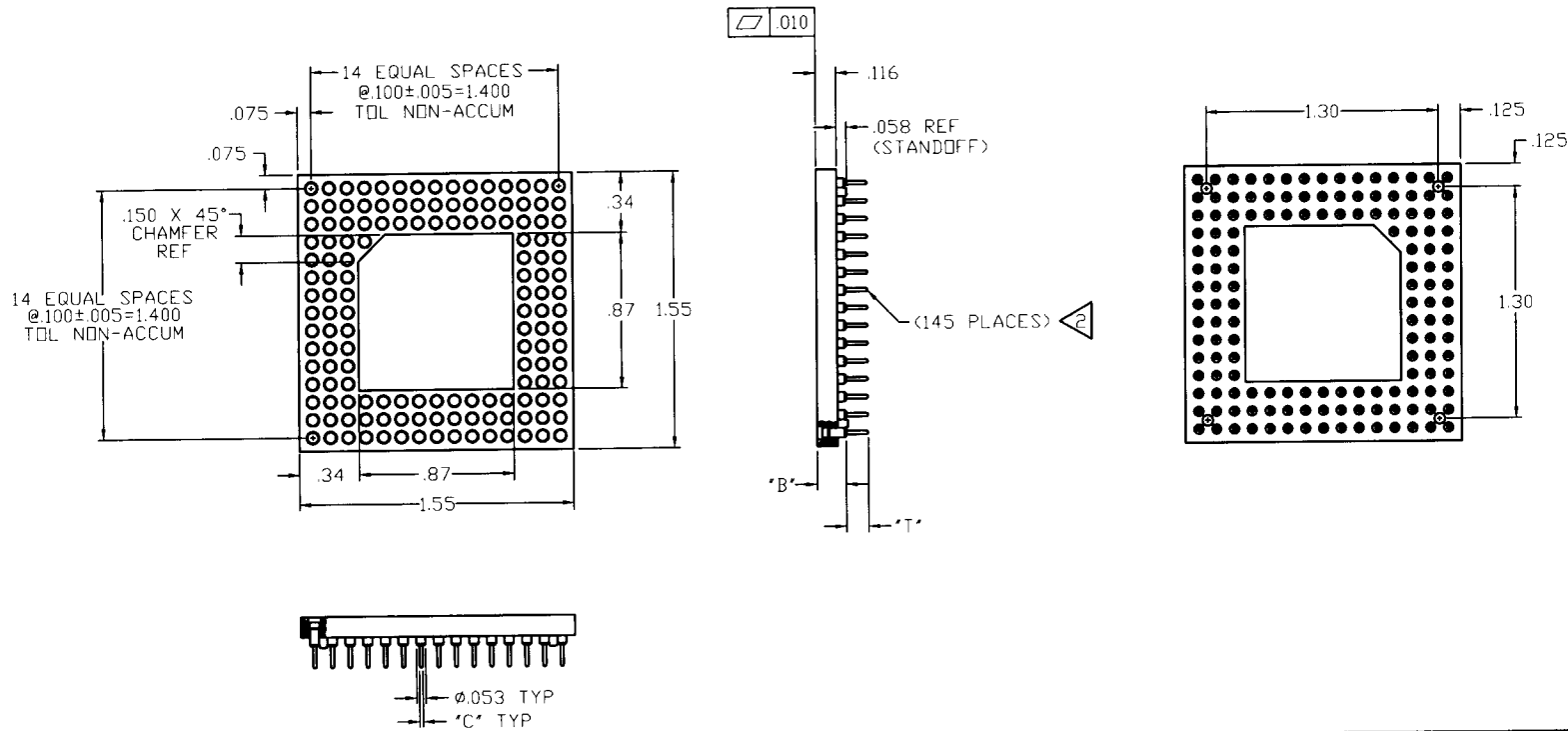


Tous droits strictement réservés. Reproduction ou communication à des tiers interdite sous quelque forme que ce soit sans autorisation écrite du propriétaire. Property of FCI. Drafts de reproduction FCI.

All rights strictly reserved. Reproduction or issue to third parties in any form whatever is not permitted without written authority from the proprietor. Property of FCI. Copyright FCI.

CONTACT PART NUMBER (XXXXY)	CLIP/SHELL PLATING	"T" TAIL LENGTH	"B" BODY LENGTH	"C" DIM.	INSERTION FORCE	EXTRACTION FORCE	NO. OF FINGERS	REF. CLIP NO.
187B5	30 μ GOLD/200 μ TIN	.108	.122	.030 DIA.	35 G ULTRA LOW	20 G	6	6 (35)
012B1	10 μ GOLD/200 μ TIN	.125	.165	.020 DIA.	65 G VERY LOW	28 G	6	6 (32)
003B1	30 μ GOLD/200 μ TIN	.125	.165	.020 DIA.	65 G VERY LOW	28 G	6	6 (32)
004B1	30 μ GOLD/10 μ GOLD	.125	.165	.020 DIA.	65 G VERY LOW	28 G	6	6 (32)
008B5	10 μ GOLD/200 μ TIN	.125	.165	.020 DIA.	35 G ULTRA LOW	20 G	6	6 (35)
009B5	30 μ GOLD/200 μ TIN	.125	.165	.020 DIA.	35 G ULTRA LOW	20 G	6	6 (35)
010B5	30 μ GOLD/10 μ GOLD	.125	.165	.020 DIA.	35 G ULTRA LOW	20 G	6	6 (35)
026B5	30 μ GOLD/200 μ TIN	.150	.165	.020 DIA.	35 G ULTRA LOW	20 G	6	6 (35)



**NOTES:**

- 1. MATERIAL: GLASS REINFORCED POLYPHENYLENE SULFIDE (PPS) RATED UL 94V-0, COLOR BLACK.
- CONTACT MATERIAL: OUTER SHELL: BRASS ALLOY 360, 1/2 HARD PER QQ-B-626. INNER CONTACT: BERYLLIUM COPPER, ALLOY 172 PER QQ-C-533.

PART NUMBER (SEE TABLE)  
PGA145HXXXXY-1521RS

mat'l. code				tolerances unless otherwise specified				CUSTOMER COPY		FCI Electronics www.fciconnect.com	
ltr	ecn no	dr	date	.XX ±.01				projection		title	
A	V94429	DLW	12/10/99	.XXX ±.005				INCH		145 POS. PGA SOCKET WITH BOTTOM STANDOFFS	
				.XXX ±.0020				INCH		product family	
				angles 0° ±2°				scale		PGA	
				dr D. WOLFORD 12/10/99				1:1		code	
				enrg A. VASBINDER 12/10/99						-	
				chr A. VASBINDER 12/10/99						sheet	
				appd A. VASBINDER 12/10/99						1 of 1	
sheet index		revision sheet		A 1							

cage code  
22526