

**X2 capacitors, axial leads**  
**Rated ac voltage 275 V, 50/60 Hz**
**Construction**

- Dielectric: polyester (MKT)
- Internal series connection
- Cylindrical winding
- Insulating sleeve
- Face ends sealed with epoxy resin

**Features**

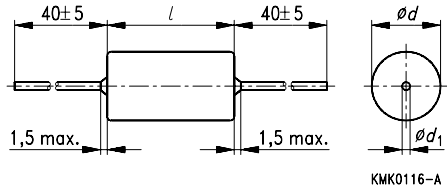
- Self-healing properties

**Terminals**

- Central axial wire leads, tinned

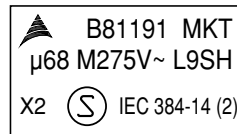
**Marking**

Manufacturer's logo, type number, style (MKT), self-healing (SH), date code, rated capacitance, capacitance tolerance (code letter), rated ac voltage, interference suppression subclass (X2), awarded marks of conformity.



Dimensions in mm

Diameter $d$ (max)	Diameter $d_1$
$\leq 8,0$	0,6
8,0 ... 16	0,8
$> 16,0$	1,0



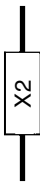
KMK0574-R

**Delivery mode**

Bulk (untaped)

**Marks of conformity**

Marks of conformity	Standards	Certificate
Ⓢ	EN 132 400, IEC 384-14, 2nd edition	9645082-01



**B 81 191**

**275 Vac**

**Ordering codes and packing units**

$C_R$	Max. dimensions $d \times l$ mm	Ordering code	Packing unit (pcs) Untaped
10 nF	7,0 × 19,0	B81191-C1103-M	1000
15 nF	7,0 × 19,0	B81191-C1153-M	1000
22 nF	7,0 × 19,0	B81191-C1223-M	1000
33 nF	8,0 × 19,0	B81191-C1333-M	900
47 nF	8,0 × 19,0	B81191-C1473-M	900
68 nF	9,0 × 19,0	B81191-C1683-M	800
0,10 μF	11,0 × 19,0	B81191-C1104-M	400
0,15 μF	9,0 × 26,5	B81191-C1154-M	800
0,22 μF	11,0 × 26,5	B81191-C1224-M	400
0,33 μF	13,0 × 26,5	B81191-C1334-M	upon request
0,47 μF	15,0 × 26,5	B81191-C1474-M	upon request
0,68 μF	16,0 × 31,5	B81191-C1684-M	upon request
1,0 μF	19,0 × 31,5	B81191-C1105-M	upon request

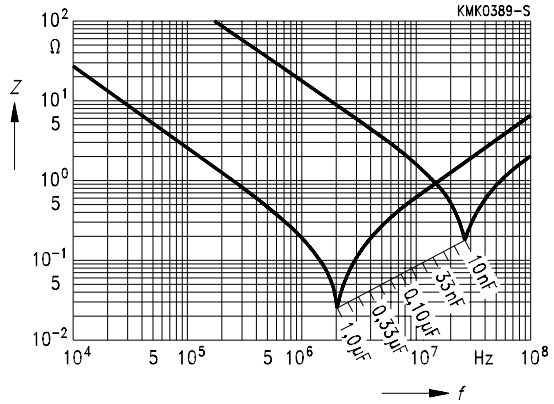
Capacitance tolerance:  $\pm 20\% \hat{=} M$

**Technical data**

Climatic category in accordance with IEC 60068-1	40/100/21
Lower category temperature $T_{min}$	- 40 °C
Upper category temperature $T_{max}$	+ 100 °C
Passive flammability category in accordance with IEC 40 (CO) 752	C
Damp heat test	21 days/40 °C/93 % relative humidity
Limit values after damp heat test	Capacitance change $\Delta C/C$ ≤ 5 % Dissipation factor change $\Delta \tan \delta$ ≤ $5 \cdot 10^{-3}$ (at 1 kHz) Insulation resistance $R_{is}$ ≥ 50 % of minimum or time constant $\tau = C_R \cdot R_{is}$ as-delivered values
Permissible continuous ac voltage	275 V (50/60 Hz)
Permissible continuous dc voltage	600 V
DC test voltage	1075 V, 2 s
Dissipation factor $\tan \delta$ at 20 °C (upper limit value)	$10 \cdot 10^{-3}$ at 1 kHz
Insulation resistance $R_{is}$ or time constant $\tau = C_R \cdot R_{is}$ at 20 °C, rel. humidity ≤ 65 % (minimum as-delivered values)	$C_R \leq 0,33 \mu F$   $C_R > 0,33 \mu F$ 30 000 MΩ   10 000 s

**Technical data**

Impedance  $Z$   
versus frequency  $f$   
(typical values)


**Pulse handling capability**

Maximum permissible voltage change per unit of time for non-sinusoidal voltages (pulse, sawtooth).

$V_R$	Max. rate of voltage rise $V_{pp}/\tau$ in $V/\mu s$ (for $V_{pp} = \hat{V}_R$ )		
	Length		
	19 mm	26,5 mm	31,5 mm
275 Vac	50	25	15

For  $V_{pp} < \hat{V}_R$ , the permissible voltage rise rate  $V_{pp}/\tau$  may be multiplied by the factor  $\hat{V}_R/V_{pp}$ . Also refer to the calculation example in chapter "General technical information", page 302.

$V_R$	Pulse characteristic $k_0$ in $V^2/\mu s$ (for $V_{pp} \leq \hat{V}_R$ )		
	Length		
	19 mm	26,5 mm	31,5 mm
275 Vac	40 000	15 000	10 000

**Herausgegeben von EPCOS AG**

**Marketing Kommunikation, Postfach 80 17 09, 81617 München, DEUTSCHLAND**

© EPCOS AG 2000. Alle Rechte vorbehalten. Vervielfältigung, Veröffentlichung, Verbreitung und Verwertung dieser Broschüre und ihres Inhalts ohne ausdrückliche Genehmigung der EPCOS AG nicht gestattet.

Mit den Angaben in dieser Broschüre werden die Bauelemente spezifiziert, keine Eigenschaften zugesichert. Bestellungen unterliegen den vom ZVEI empfohlenen Allgemeinen Lieferbedingungen für Erzeugnisse und Leistungen der Elektroindustrie, soweit nichts anderes vereinbart wird.

Diese Broschüre ersetzt die vorige Ausgabe.

Fragen über Technik, Preise und Liefermöglichkeiten richten Sie bitte an den Ihnen nächstgelegenen Vertrieb der EPCOS AG oder an unsere Vertriebsgesellschaften im Ausland.

Bauelemente können aufgrund technischer Erfordernisse Gefahrstoffe enthalten. Auskünfte darüber bitten wir unter Angabe des betreffenden Typs ebenfalls über die zuständige Vertriebsgesellschaft einzuholen.

**Published by EPCOS AG**

**Marketing Communications, P.O. Box 80 17 09, 81617 Munich, GERMANY**

© EPCOS AG 2000. All Rights Reserved. Reproduction, publication and dissemination of this brochure and the information contained therein without EPCOS' prior express consent is prohibited.

The information contained in this brochure describes the type of component and shall not be considered as guaranteed characteristics. Purchase orders are subject to the General Conditions for the Supply of Products and Services of the Electrical and Electronics Industry recommended by the ZVEI (German Electrical and Electronic Manufacturers' Association), unless otherwise agreed.

This brochure replaces the previous edition.

For questions on technology, prices and delivery please contact the Sales Offices of EPCOS AG or the international Representatives.

Due to technical requirements components may contain dangerous substances. For information on the type in question please also contact one of our Sales Offices.