

The Data Book Project

DatasheetArchive.com has launched an ambitious effort to digitize thousands of obsolete data books and technical manuals, making them searchable via the DatasheetArchive website.

Scroll down to see the scanned document.

GENERAL DESCRIPTION

The RM725 and RC725 are high performance, high gain operational amplifiers on a silicon planar epitaxial processed chip.

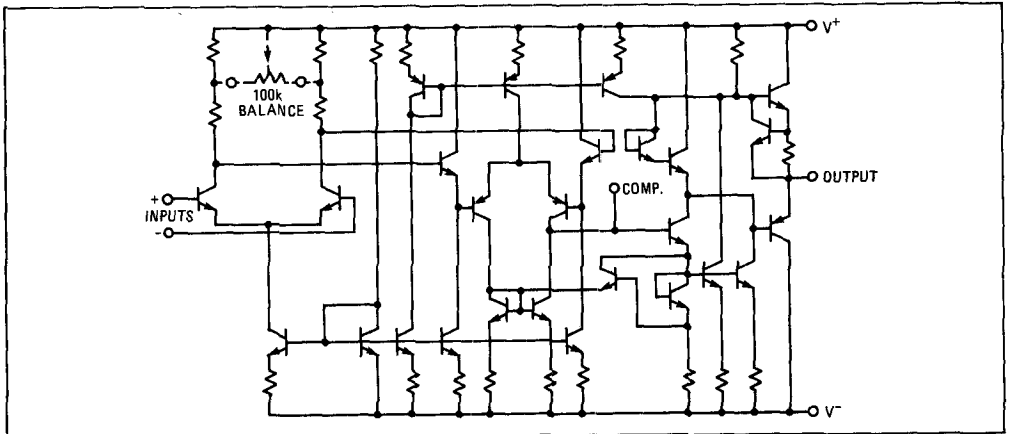
The RM725 military version operates over full temperature range from -55°C to $+125^{\circ}\text{C}$. The commercial RC725 operates from 0°C to $+70^{\circ}\text{C}$.

The RM725 and RC725 offer offset null capability, very high voltage gain and low power consumption over a wide power supply voltage range. They are used for all instrumentation applications requiring precise, low level signal amplification, low noise, low drift and accurate closed loop gain.

DESIGN FEATURES

- Low Input Noise Current $0.15\text{pA}/\sqrt{\text{Hz}}$
- High Open Loop Gain 3,000,000
- Low Input Offset Current 2nA
- Low Input Voltage Drift $0.6\mu\text{V}/^{\circ}\text{C}$
- High Common-Mode Rejection 120dB
- High Input Voltage Range $\pm 14\text{V}$
- Wide Power Supply Range $\pm 3\text{V}$ to $\pm 22\text{V}$
- Offset Null Capability

SCHEMATIC DIAGRAM



CONNECTION INFORMATION

**TE (TO-99)
Metal Can Package
(Top View)**

Note: Pin 4 connected to case

Order Part Nos.:
RM725T, RC725T

**DE and NB Dual
In-line Package
(Top View)**

Order Part Nos.:
RM725DE, RC725DE,
RC755NB

PIN	FUNCTION
1	BAL
2	-INPUT
3	+INPUT
4	V-
5	COMP
6	OUTPUT
7	V+
8	BAL

ABSOLUTE MAXIMUM RATINGS

Supply Voltage	±22V	Storage Temperature Range	-65°C to +150°C
Internal Power Dissipation (Note 1)	500mW	Operating Temperature Range	
Differential Input Voltage	±5V	RM725	-55°C to +125°C
Input Voltage (Note 2)	±22V	RC725	0°C to +70°C
Voltage Between Offset Null and V ⁺	±0.5V	Lead Temperature (Soldering, 60s)	300°C

ELECTRICAL CHARACTERISTICS (V_S = ±15V, T_A = 25°C unless otherwise specified)

PARAMETER	CONDITIONS	RM725			RC725			UNITS
		MIN	TYP	MAX	MIN	TYP	MAX	
Input Offset Voltage (without external trim)	R _S ≤ 10kΩ		0.5	1.0		0.5	2.5	mV
Input Offset Current			2.0	20		2.0	35	nA
Input Bias Current			42	100		42	125	nA
Input Noise Voltage	f _o = 10Hz		15			15		nV√/Hz
	f _o = 100Hz		9.0			9.0		
	f _o = 1kHz		8.0			8.0		
Input Noise Current	f _o = 10Hz		1.0			1.0		pA√/Hz
	f _o = 100Hz		0.3			0.3		
	f _o = 1kHz		0.15			0.15		
Input Resistance			1.5			1.5		MΩ
Input Voltage Range			±13.5	±14		±13.5	±14	V
Large Signal Voltage Gain	R _L ≥ 2kΩ V _{out} = ±10V	1,000,000	3,000,000		250,000	3,000,000		
Common Mode Rejection Ratio	R _S ≤ 10kΩ	110	120		94	120		dB
Power Supply Rejection Ratio	R _S ≤ 10kΩ		2.0	10		2.0	35	μV/V
Output Voltage Swing	R _L ≥ 10kΩ		±12	±13.5		±12	±13.5	V
	R _L ≥ 2kΩ		±10	±13.5		±10	±13.5	
Output Resistance			150			150		Ω
Power Consumption			80	105		80	150	mW
The following specifications apply for -55°C ≤ T _A ≤ +125°C for RM725, 0°C ≤ T _A ≤ +70°C for RC725.								
Input Offset Voltage (without external trim)	R _S ≤ 10kΩ			1.5			3.5	mV
Average Input Offset Voltage Drift (without external trim)	R _S = 50Ω		2.0	5.0		2.0		μV/°C
Average Input Offset Voltage Drift (with external trim)	R _S = 50Ω		0.6			0.6		μV/°C
Input Offset Current	T _A = 125°C; 70°C		1.2	20		1.2	3.5	nA
	T _A = -55°C; 0°C		7.5	40		4.0	50	
Average Input Offset Current Drift			35	150		10		pA/°C
Input Bias Current	T _A = 125°C; 70°C		20	100			125	nA
	T _A = -55°C; 0°C		80	200			250	
Large Signal Voltage Gain	T _A = 125°C; 70°C	1,000,000			125,000			
	T _A = -55°C; 0°C	250,000			125,000			
Common Mode Rejection Ratio	R _S ≤ 10kΩ	100				115		dB
Power Supply Rejection Ratio	R _S ≤ 10kΩ			20		20		μV/V
Output Voltage Swing	R _L ≥ 2kΩ		±10			±10		V

NOTES:

1. Rating applies for case temperature to +125°C; derate linearly at 6.5 mW/°C for ambient temperature above +75°C.
2. For supply voltages less than ±22V, the absolute maximum input voltage is equal to the supply voltage.

