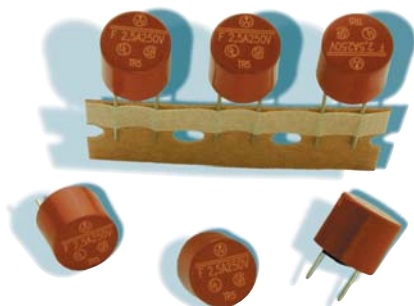
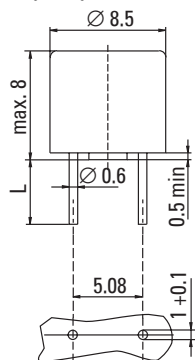


No. 373 / TR5®



Dimensions (mm)



Holes in PCB
Long Leads (L=18.8mm)
Short Leads (L=4.3mm)

UL 248-14, 250 V, F

lead free

Time-Current Characteristic

Quick Acting (F)

Standard

UL 248-14
CSA C22.2 No. 248.14

Approvals

UL Listed
CSA Certified

Features

Reduced PCB space requirements
Direct solderable or plug-in versions
Internationally approved
Low internal resistance
Shocksafe casing
Vibration resistant
Halogen free

WebLinks

Further infos see:

www.wickmanngroup.com

Further application infos see

Fuseology:

www.wickmanngroup.com/download/fuseology.pdf

Specifications

Packaging

000: Tape/Ammopack (1000 pcs.)
041: Short Leads - Bulk (1000 pcs.)

Materials

Base/Cap: Brown Thermoplastic
Polyamide PA 6.6, UL 94V0
Round Pins: Copper, Sn plated

Operating Temperature

-40 °C to +85 °C (consider de-rating)

Climatic Category

-40 °C/+85 °C/21 degree (EN 60068-1,-2-1,-2-2,-2-78)

Stock Conditions

+10 °C to +60 °C
relative humidity ≤ 75 % yearly average,
without dew, maximum value for 30 days-95 %

Vibration Resistance

24 cycles at 15 min. each (EN 60068-6)
10 - 60 Hz at 0.75 mm amplitude
60 - 2000 Hz at 10 g acceleration

Lead Pull Strength

10 N (EN 60068-2-21)

Solderability

260 °C, ≤ 3 s (Wave)
350 °C, ≤ 3 s (Soldering iron)

Soldering Heat Resistance

260 °C, 10 s (IEC 60068-2-20)

Marking

Ⓜ, 373, 250 V, F, Current Rating, Approvals

Unit Weight

0.77 g (approx.)



Limits for Pre-arcing Time

Rated Current	$2.0 \times I_N$ Ⓜ
50 mA ... 6.30 A	< 5 s
8.00 A ... 10.00A	< 60 s

Permissible continuous operating current is ≤ 70 % at ambient temperature of 23 °C (73.4 °F).

Rated Current	Amp Code	Voltage Rating	Breaking Capacity	Voltage Drop $1.0 \times I_N$ Ⓜ max. (mV)	Power Dissipation $1.0 \times I_N$ Ⓜ max. (mW)	Melting Integral $10 \times I_N$ Ⓜ max. (A ² s)	Approvals		
							UL	CSA	cULus
50mA	0050	250V		1400	70	0.0001	•	•	
63mA	0063	250V		1300	85	0.00023	•	•	
80mA	0080	250V		1200	100	0.00037	•	•	
100mA	0100	250V		1100	110	0.0013	•	•	
125mA	0125	250V		1000	125	0.0019	•	•	
160mA	0160	250V		950	155	0.004	•	•	
200mA	0200	250V		850	170	0.0065	•	•	
250mA	0250	250V		750	190	0.014	•	•	
315mA	0315	250V		650	205	0.032	•	•	
400mA	0400	250V	50A/250V AC 50-60 Hz cos φ=1.0	230	95	0.016	•	•	
500mA	0500	250V		220	110	0.025	•	•	
630mA	0630	250V		210	135	0.045	•	•	
800mA	0800	250V		200	160	0.069	•	•	
1.00A	1100	250V		190	190	0.125	•	•	
1.25A	1125	250V		180	225	0.2	•	•	
1.60A	1160	250V		170	275	0.38	•	•	
2.00A	1200	250V		160	320	0.63	•	•	
2.50A	1250	250V		150	375	1.2	•	•	
3.15A	1315	250V		140	445	1.9	•	•	
4.00A	1400	250V		130	520	3.5	•	•	
5.00A	1500	250V		120	630	6.2	•	•	
6.30A	1630	250V		115	1000	9.1	•	•	
8.00A ¹	1800	250V		120	1600	30			•
10.00A ¹	2100	250V		110	2000	55			•

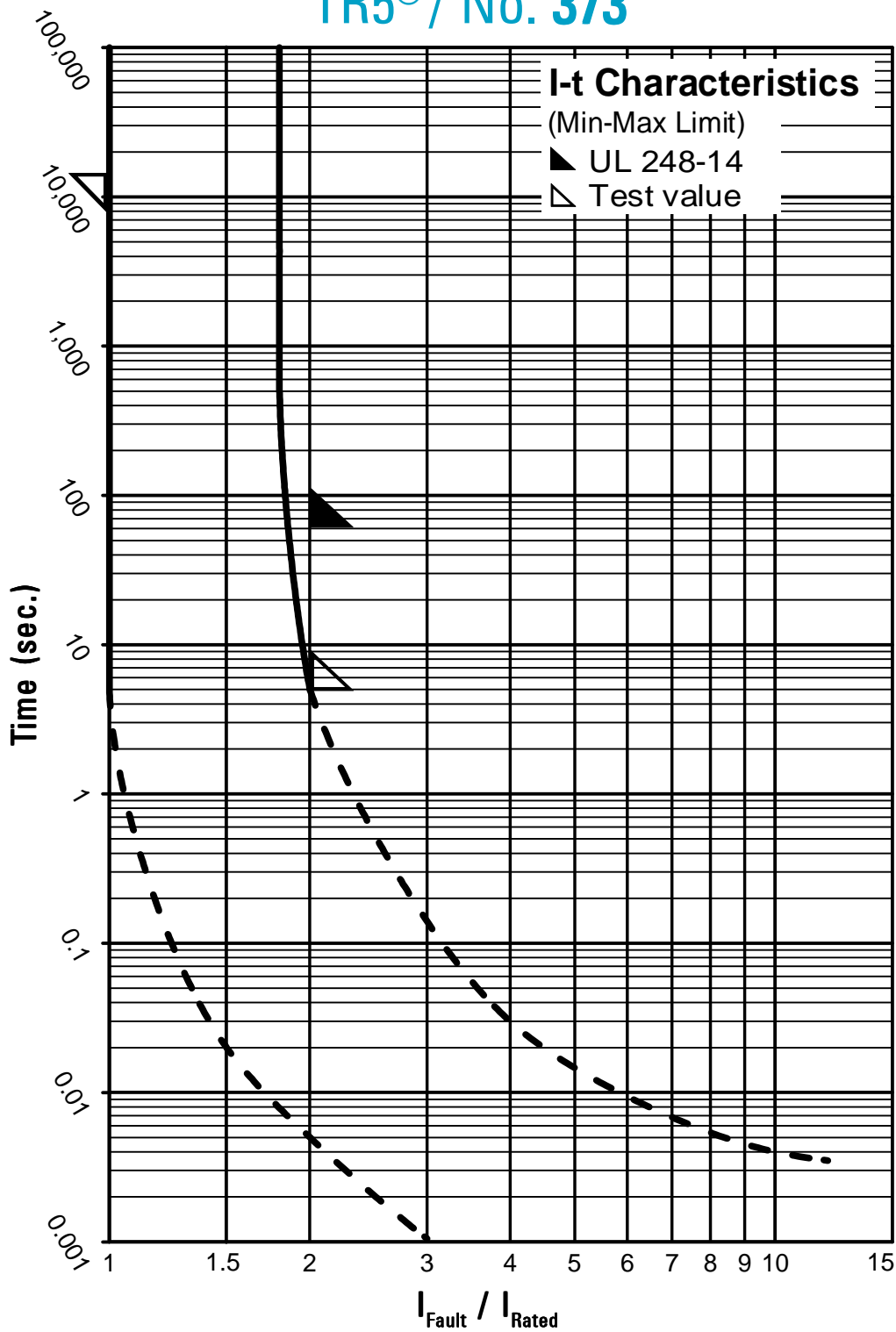
¹ Conducting path cross-section minimum ≥ 0.2mm²

Order Information

Qty.	Order-Number	Series	Amp Code	Packaging
		373		

Specifications are subject to change without notice

TR5[®] / No. 373



Contact WICKMANN for individual I-t curves