

## Ceramic Receiver Cartridge

Series: **WM-71/75**



### ■ Features

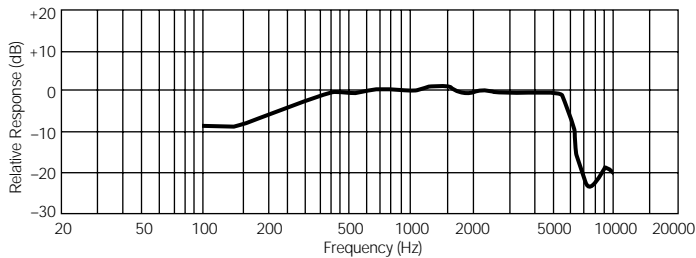
- Ceramic receiver lightest in weight, compact and thin

### ■ Specifications

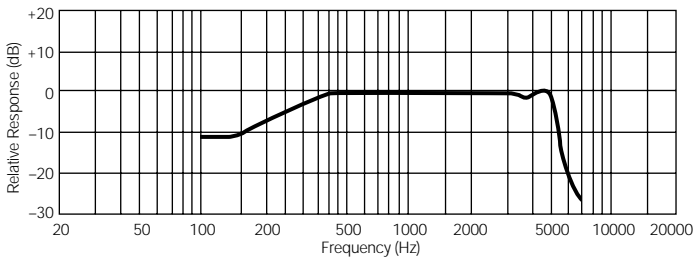
Output S.P.L.	106±3dB (Vin = 1 Vrms, 1kHz)
Impedance	2.0 kΩ (1kHz)
Capacitance	80nF (1kHz)
Max. input voltage	10 Vrms

### ■ Typical Frequency Response Curve

WM-71

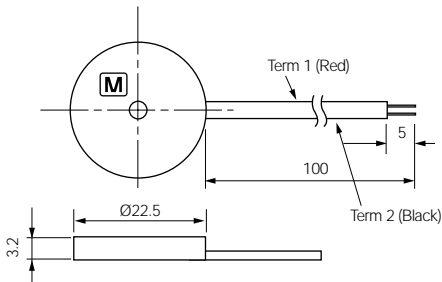


WM-75



### ■ Dimensions in mm (not to scale)

WM-71



WM-74

