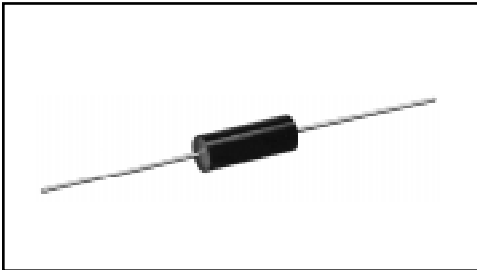




MODELS LVR-1, LVR-3, LVR-5 Wirewound Resistors

Military, MIL-R-49465 Qualified, Type RLV
Commercial, Precision Power, Low Value



FEATURES

- Ideal for all types of current sensing applications including switching and linear power supplies, instruments and power amplifiers
- Proprietary processing technique produces extremely low resistance values
- Excellent load life stability
- Low temperature coefficient
- Low inductance
- Cooler operation for high power to size ratio

STANDARD ELECTRICAL SPECIFICATIONS

MODEL	MIL-R-49465 TYPE	POWER RATING (Watts)	RESISTANCE RANGE* (Ohms) MIL Range shown in bold face	MAXIMUM WEIGHT (Grams)
LVR-1	—	1	0.01 - 0.1	2
	—	—	—	—
LVR-3	—	3	0.005 - 0.2	2
	RLV30	3	0.01 - 0.2	2
LVR-5	—	5	0.005 - 0.3	5
	RLV31	5	0.01 - 0.3	5

* Resistance must be measured 3/8" [9.52mm] from the body of the resistor, or at 1.183" [30.05mm], 1.315" [33.40mm] or 1.675" [42.545mm] spacing for the LVR-1, LVR-3 or LVR-5 respectively.

ELECTRICAL SPECIFICATIONS

Resistance Range: 0.005 ohm to 0.3 ohm. Values stocked at $\pm 3\%$ tolerance include: 0.005 ohm, 0.01 ohm, 0.015 ohm, 0.02 ohm, 0.025 ohm, 0.03 ohm, 0.04 ohm, 0.05 ohm, 0.07 ohm, 0.08 ohm and 0.1 ohm. Contact factory for other values.

Resistance Tolerance: $\pm 1\%$, $\pm 3\%$, $\pm 5\%$, $\pm 10\%$.
Lower tolerances available as specials.

Temperature Coefficient: Measured from -55°C to $+125^{\circ}\text{C}$, referenced to $+25^{\circ}\text{C}$.

Dielectric Strength: 500 VAC.

Insulation Resistance: 10,000 Megohm minimum dry.

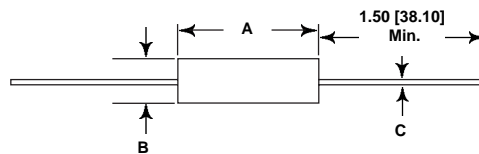
Short Time Overload: 5 seconds at 5 times rated power.

MECHANICAL SPECIFICATIONS

Terminal Strength: 5 pound pull test = LVR-1.
10 pound pull test = LVR-3, LVR-5.

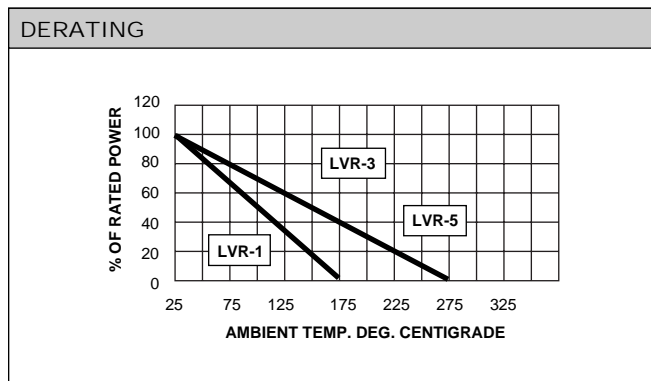
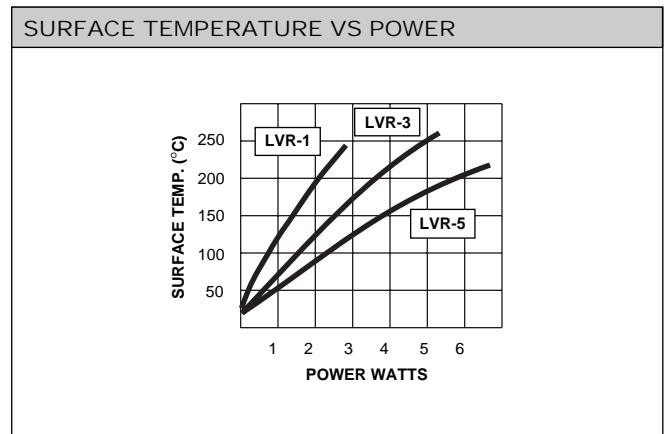
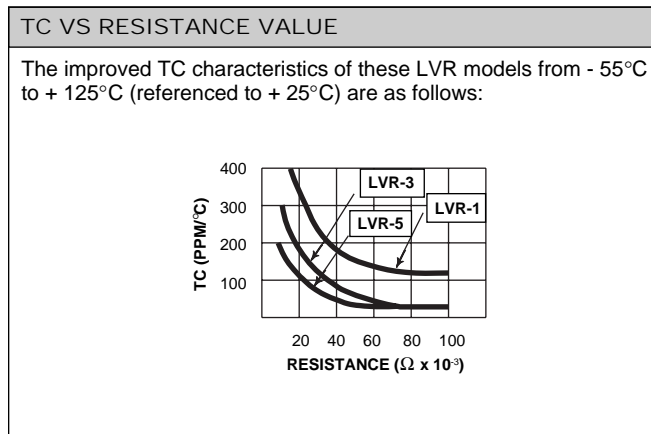
Solderability: Satisfactory when tested in accordance with MIL-STD-202, Method 208.

DIMENSIONAL CONFIGURATIONS [Numbers in brackets indicate millimeters]



MODEL	A $\pm .010$ [.254]	B $\pm .010$ [.254]	C $\pm .002$ [.051]
LVR-1	.427 [10.85]	.115 [2.92]	.020 [.508]
LVR-3	.560 [14.22]	.205 [5.20]	.032 [.813]
LVR-5	.925 [23.50]	.330 [8.38]	.040 [1.02]

ENVIRONMENTAL PERFORMANCE		
TEST	MIL-R-49465 MAXIMUM	UNITS
Resistance-Temperature Characteristic	(See chart)	PPM/°C
Maximum Ambient Temperature at Rated Wattage	25	Degrees Celsius
Maximum Ambient Temperature at Zero Power	LVR-1 = 175. LVR-3 & LVR-5 = 275.	
Thermal Shock	± 0.2%	Maximum percent change in resistance (.0005 ohm additional allowed for measurement error).
Short Time Overload	± 0.5%	
Terminal Strength	± 0.1%	
Dielectric Withstanding Voltage	± 0.1%	
Insulation Resistance	1.000MΩ	
High Temperature Exposure	± 1.0%	
Moisture Resistance	± 0.2%	
Low Temperature Storage	± 0.2%	
Shock, Specified Pulse	± 0.1%	
Vibration, High Frequency	± 0.1%	
Life	± 2.0%	
Tolerance	± 1%, ± 3%, ± 5%	Percent



- PART MARKING**
- Dale®
 - Model
 - Value
 - Tolerance
 - Date code

HOW TO ORDER

LVR-3
MODEL
0.05Ω
VALUE
± 1%
TOLERANCE