

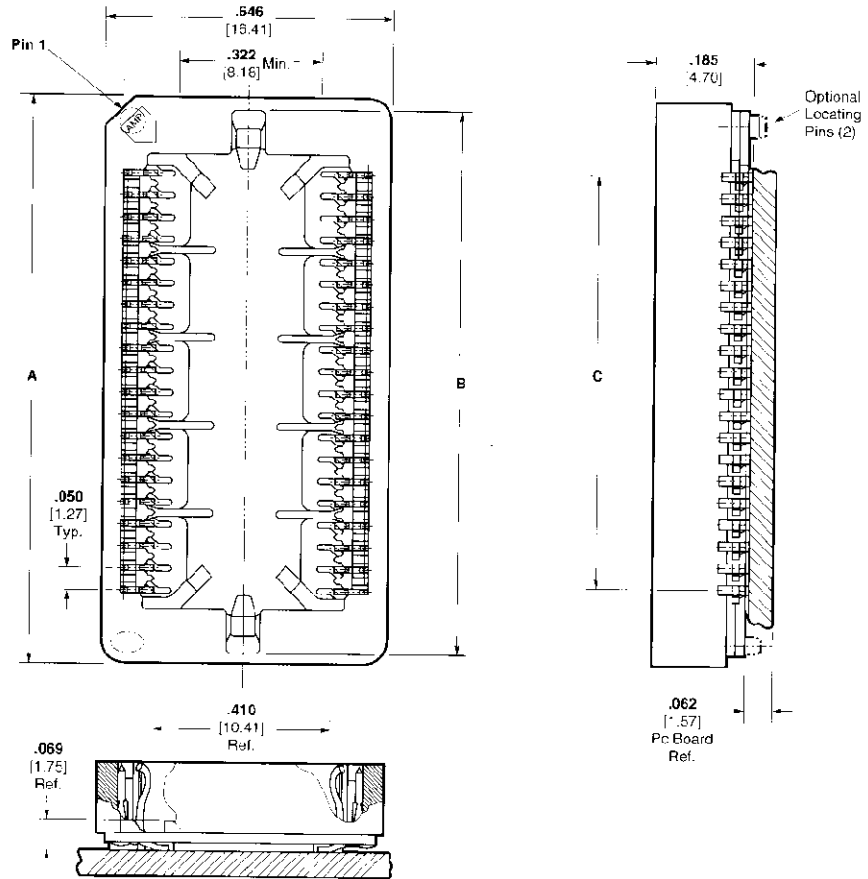
Low Profile SOJ-Style Surface Mount Sockets (Continued)

.400 [10.16] Centerline

Material and Finish:

Housing—Polyphenylene Sulfide, UL 94V-0 rated

Contacts—Phosphor bronze with .000200 [0.00508] min. 93/7 tin-lead plating over .000050 [0.00127] min. nickel plating

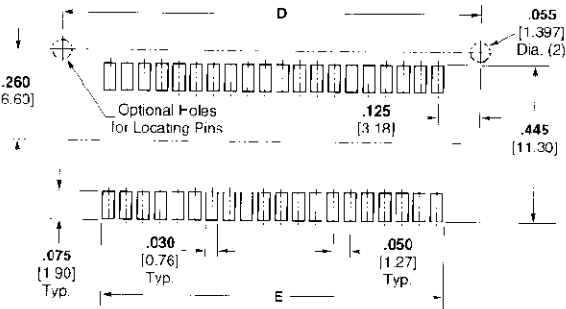


Extraction Tool

This tool is designed to remove plastic leaded chip carriers from AMP Low Profile Surface Mount Sockets, including the SOJ-style. The tool is contoured for insertion into either of two extraction cavities on the chip carrier socket



Part No. 822154-1



Recommended PC Board Pattern

No. of Pos.	Dimensions					Without Locating Pins		With Locating Pins
	A	B	C	D	E	Tube Packaged	Tape Mounted	
28	1.105 25.78	.828 21.03	.650 16.51	.900 22.86	.680 17.27	822361-1	3-822361-1	822363-1
32	1.115 28.32	1.028 26.11	.750 19.05	1.000 25.40	.780 19.81	822362-1	3-822362-1	822364-1
40	1.315 33.40	1.228 31.19	.950 24.13	1.200 30.48	.980 24.89	822265-2	3-822265-2	822267-2
42	1.365 34.67	1.278 32.45	1.000 25.40	—	1.030 26.42	822378-1	3-822378-1	—